

TATES

020 7602 6020



North End House, Fitzjames Avenue, London W14 0RZ

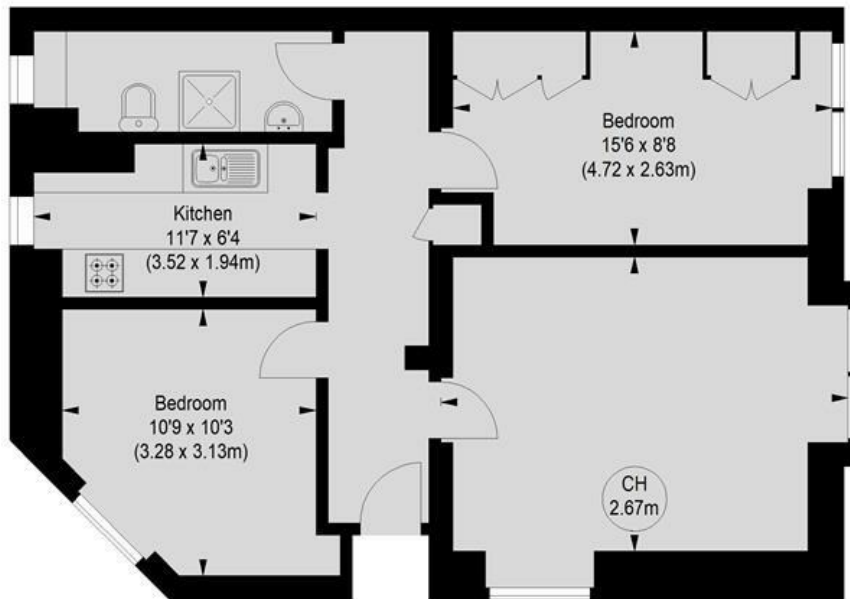
£595,000

- Two Bedrooms
- Gated development
- Share of Freehold
- Barons Court tube (District & Piccadilly)
- Ground Floor
- Communal gardens
- 24 Hr security
- West Kensington tube (District)

NORTH END HOUSE, W14

Approximate gross internal area
62.34 sq ft / 671 sq m

Key :
CH - Ceiling Height



GROUND FLOOR

Not to scale, for guidance only and must not be relied upon as a statement of fact.
All measurements and areas are approximate only

Whilst these particulars are produced in good faith and are believed to be correct, no guarantee is given, nor any responsibility accepted, by Tates nor by any of its representatives, for their accuracy. The particulars do not constitute part of any offer or contract, and it is recommended that such things as measurements, condition, structure, services, appliances, fixtures and fittings and facilities are all independently assessed by the prospective purchaser or renter of the subject property prior to committing to any contract.

Energy Efficiency Rating		
	Current	Potential
Very energy efficient - lower running costs		
(92 plus) A		
(81-91) B		
(69-80) C		
(55-68) D		
(39-54) E		
(21-38) F		
(1-20) G		
Not energy efficient - higher running costs		
	61	74
England & Wales <small>EU Directive 2002/91/EC</small>		

135 Hammersmith Road, West Kensington, London W14 0QL

mail@tatesestates.co.uk

tatesestates.co.uk

Tates (Agents) Ltd. Registered in England and Wales No. 02356337
Registered Office: Imperial House, 8 Keane Street, London WC2B 4AS

